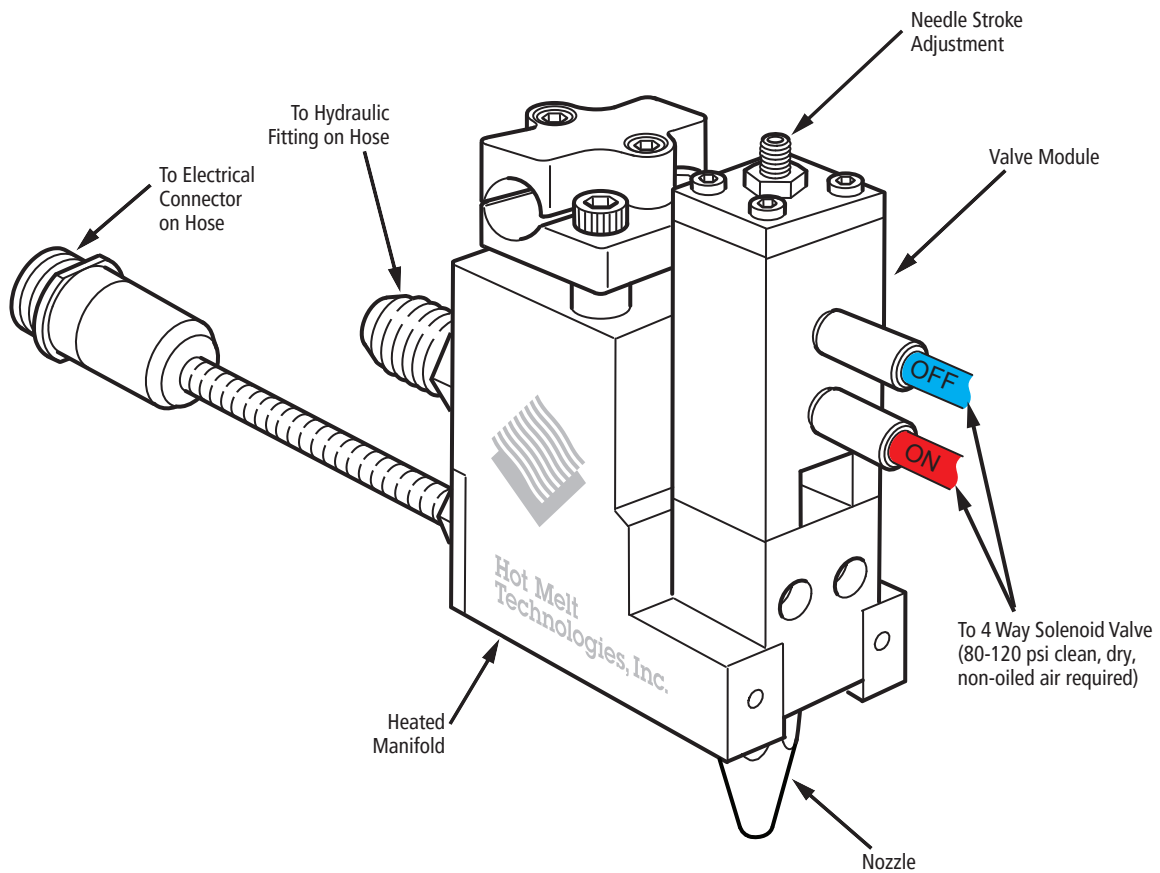




600 Series Automatic Gun

ASSEMBLY NUMBERS	
PART NO	DESCRIPTION
AV-600-RU	120 VAC Single Valve
AV-600-RS	120 VAC Single Valve
XP-600-RU	220 VAC Single Valve
XP-600-RS	220 VAC Single Valve

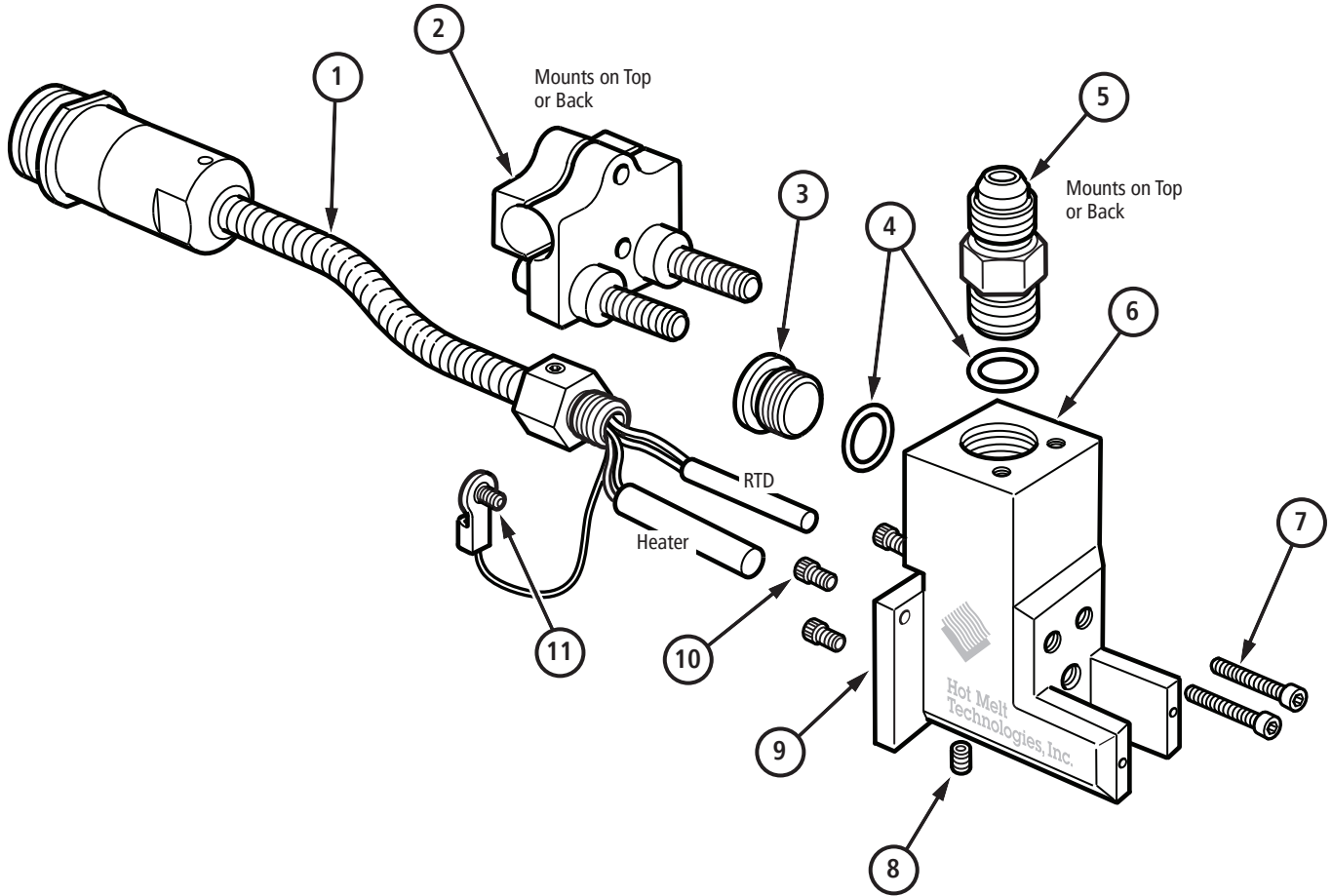




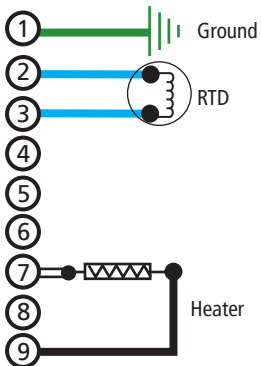
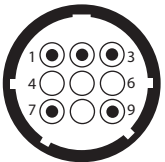
VM Manifold Universal

VM-678-RU-1, 120 VAC

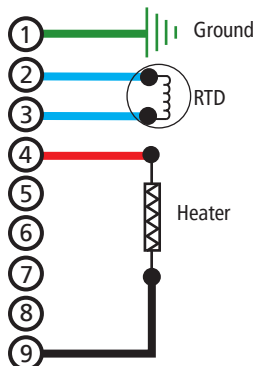
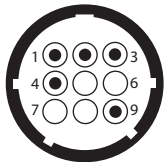
VM-678-RU-2, **220 VAC**



120 VAC



220 VAC



BILL OF MATERIALS

ITEM	DESCRIPTION	PART NO	QTY
1a	DFS AV-678 Heater Harness 120 VAC, 150W	922-090	1
1b	DFS XP-678 Heater Harness 220 VAC , 150W	922-290	1
2	AV 1/2" Rod Mounting Clamp Kit	913-004	1
3	Straight Thread Plug, 9/16"-18	160-047	1
4	O-ring, Viton for 9/16"-18 Fitting	520-046	2
5	Fluid Fitting	See Hose Fitting Page	1
6	AV Single Port Manifold, Universal	130-040	1
7	Socket Head Cap Screw 10-32 × 1"	322-060	2
8	Pipe plug 1/16 NPT, Flush	160-196	1
9	AV Single Port Manifold Cover Plate	130-032	1
10	Socket Head Cap Screw 8-32 × 1/4"	322-029	3
11	Socket Head Cap Screw 6-32 × 1/4"	322-002	1

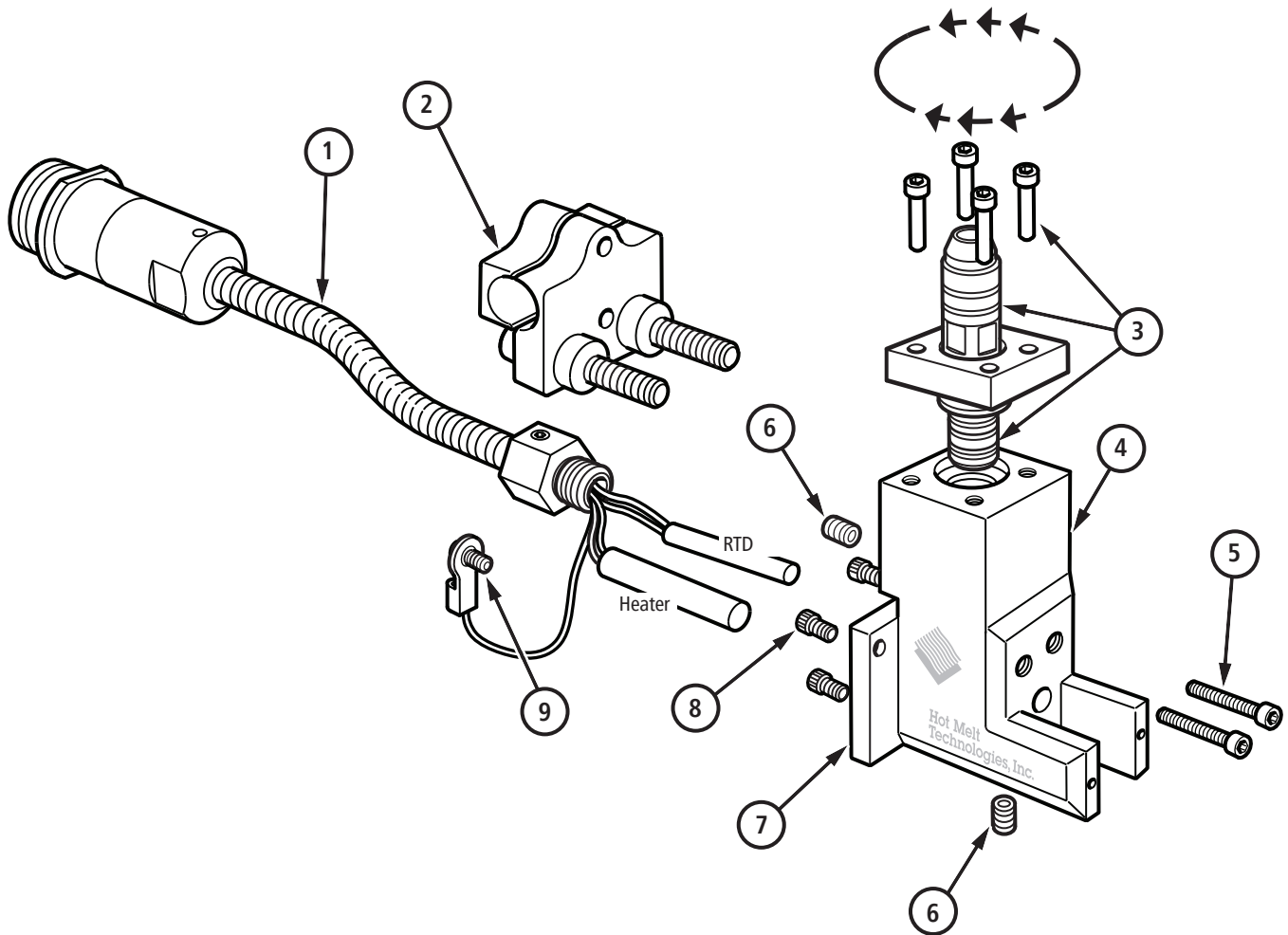




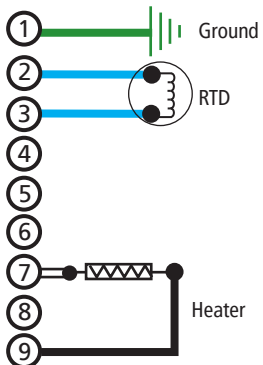
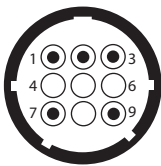
VM Manifold 360° Swivel

VM-678-RS-1, 120 VAC

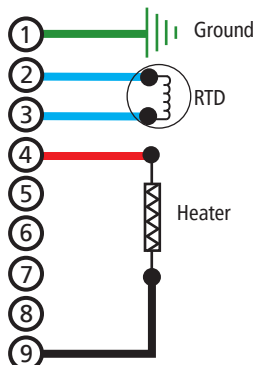
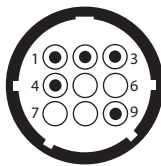
VM-678-RS-2, 220 VAC



120 VAC



220 VAC



BILL OF MATERIALS

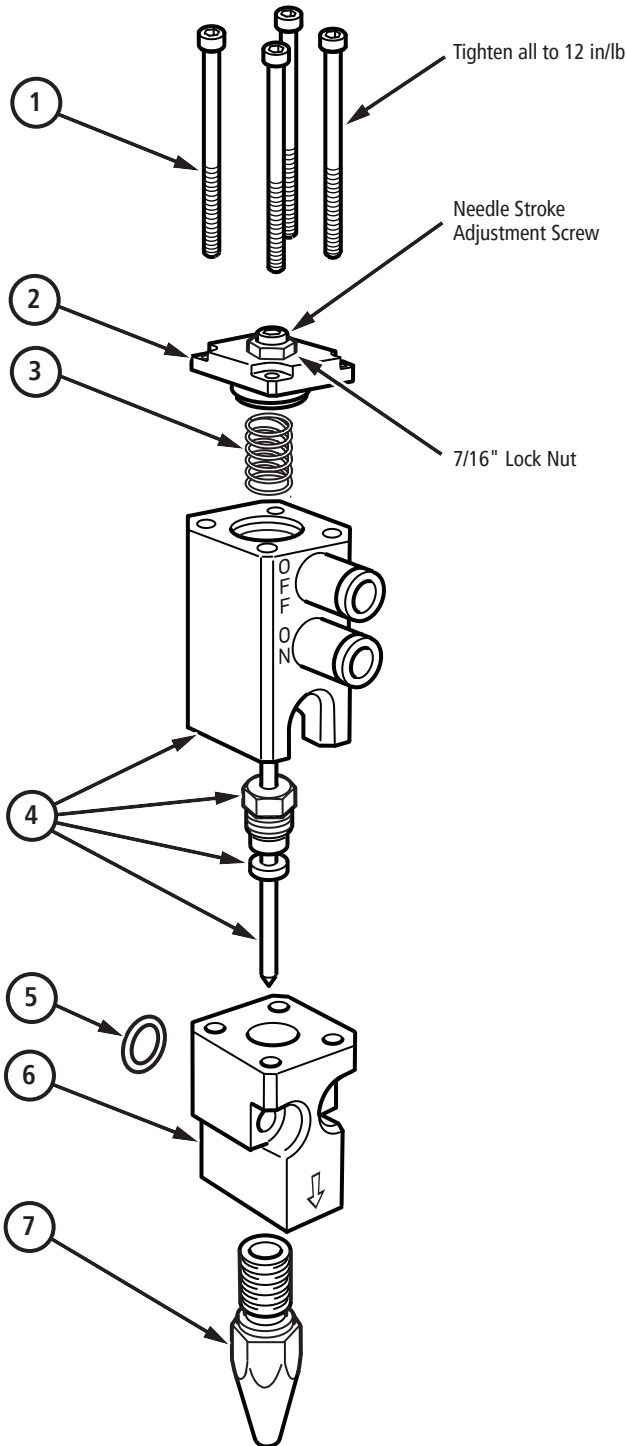
ITEM	DESCRIPTION	PART NO	QTY
1a	DFS AV-678 Heater Harness 120 VAC, 150W	922-090	1
1b	DFS XP-678 Heater Harness 220 VAC, 150W	922-290	1
2	AV 1/2" Rod Mounting Clamp Kit	913-004	1
3	JIC Swivel Assembly	912-546	1
4	Manifold Block	130-031	1
5	Socket Head Cap Screw 10-32 × 1"	322-060	2
6	Pipe plug 1/16 NPT, Flush	160-196	2
7	Manifold Cover Plate	130-032	1
8	Socket Head Cap Screw 8-32 × 1/4"	322-029	3
9	Socket Head Cap Screw 6-32 × 1/4"	322-002	1





600 Series Valve Module Assembly

913-020



Service Information

Needle Stroke Adjustment Screw:

Adjusts how far the needle lifts off the needle seat/ nozzle when activated.

How to Adjust:

1. Disconnect actuation air supply.
2. Loosen the 7/16" lock nut.
3. Using a 1/8" allen wrench, turn the adjustment screw clockwise until the needle makes contact with the needle seat/nozzle.

Caution: Do not overtighten, only make contact.

4. Back the adjustment screw out (counter clockwise) until the appropriate flow for your application is reached.

Note: Shorter stroke = longer seal life.

4. Tighten the lock nut while holding the adjustment screw in place.
5. Reconnect actuation air supply.

Activation Air Pressure:

80 - 120 psi clean, dry, non-oiled air must be used.

Note: Air Pressure less than 80 psi may cause sluggish cycling and/or leaks.

BILL OF MATERIALS			
ITEM	DESCRIPTION	PART NO	QTY
1	Socket Head Cap Screw 8-32 × 2 1/2"	322-040	4
2	DFS AV Stroke Adjustment Cap	913-006	1
3	AV Piston Return Spring	130-045	1
4	DFS AV-600 Piston Needle Kit	913-025	1
5	O-ring	520-023	1
6	AV Fluid Valve Body	130-041	1
7	600 Series Nozzle	See Nozzles	1

