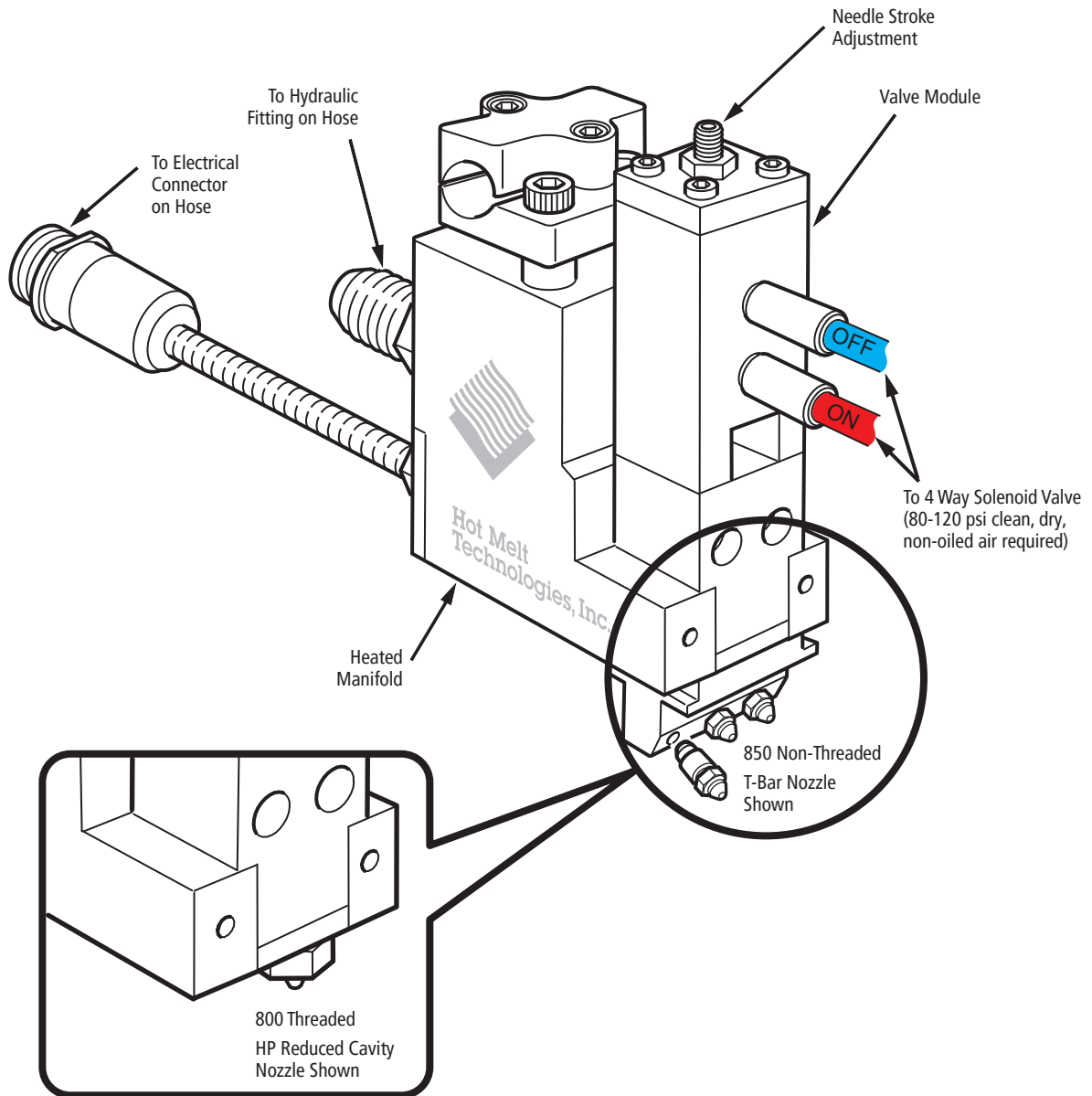




# 800 Series Automatic Gun

ASSEMBLY NUMBERS	
PART NO	DESCRIPTION
AV-800-RU	120 VAC Single Valve
AV-850-RU	120 VAC Single Valve
AV-850-RS	120 VAC Single Valve
XP-800-RU	220 VAC Single Valve
XP-850-RU	220 VAC Single Valve
XP-850-RS	220 VAC Single Valve

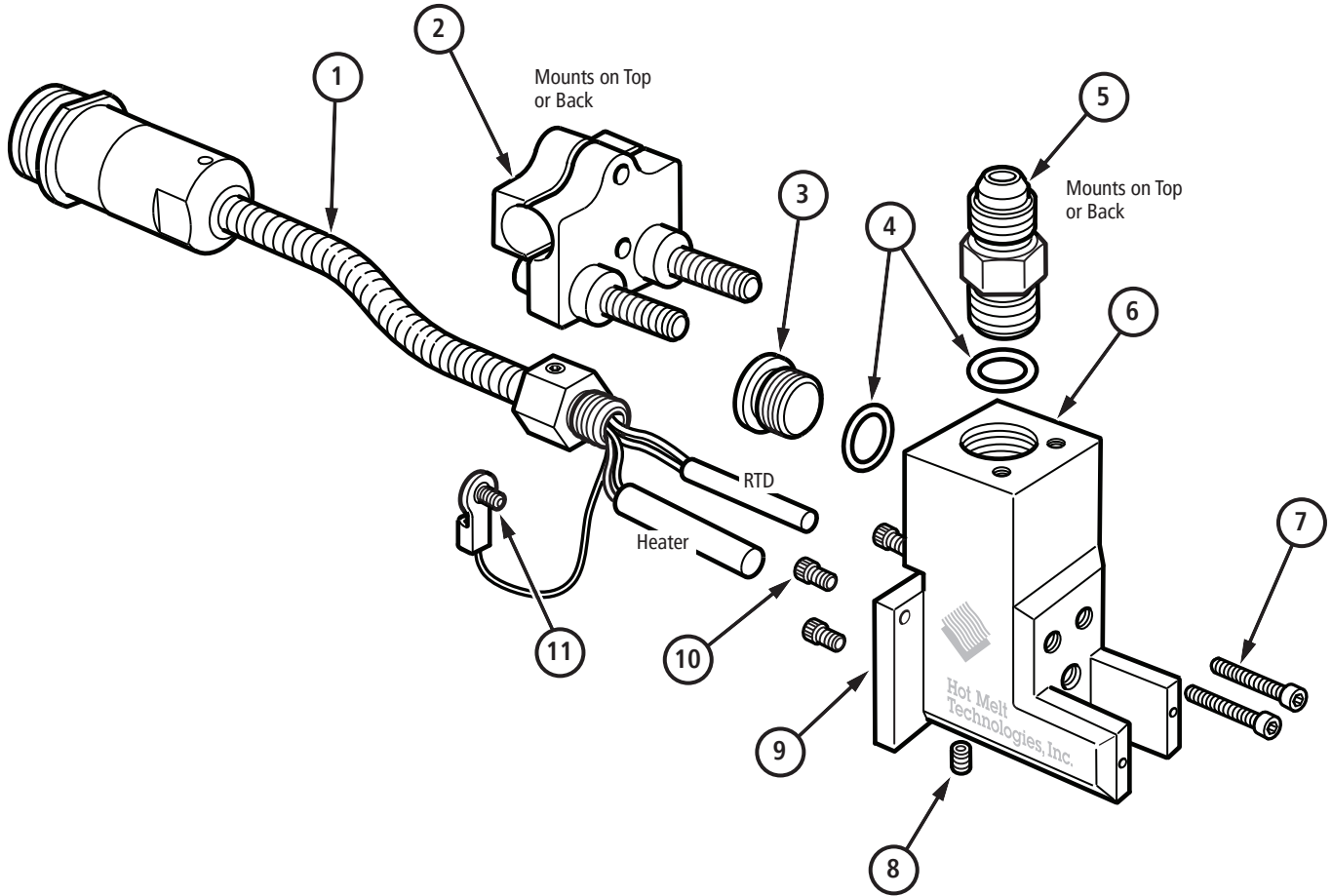




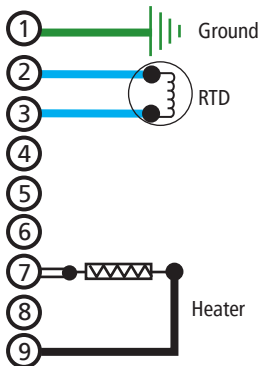
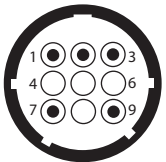
# VM Manifold Universal

VM-678-RU-1, 120 VAC

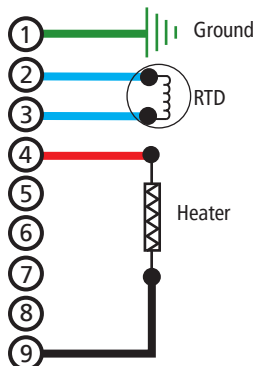
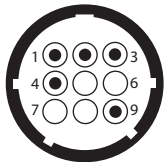
VM-678-RU-2, **220 VAC**



120 VAC



220 VAC



## BILL OF MATERIALS

ITEM	DESCRIPTION	PART NO	QTY
1a	DFS AV-678 Heater Harness 120 VAC, 150W	922-090	1
1b	DFS XP-678 Heater Harness <b>220 VAC</b> , 150W	922-290	1
2	AV 1/2" Rod Mounting Clamp Kit	913-004	1
3	Straight Thread Plug, 9/16"-18	160-047	1
4	O-ring, Viton for 9/16"-18 Fitting	520-046	2
5	Fluid Fitting	See Hose Fitting Page	1
6	AV Single Port Manifold, Universal	130-040	1
7	Socket Head Cap Screw 10-32 × 1"	322-060	2
8	Pipe plug 1/16 NPT, Flush	160-196	1
9	AV Single Port Manifold Cover Plate	130-032	1
10	Socket Head Cap Screw 8-32 × 1/4"	322-029	3
11	Socket Head Cap Screw 6-32 × 1/4"	322-002	1

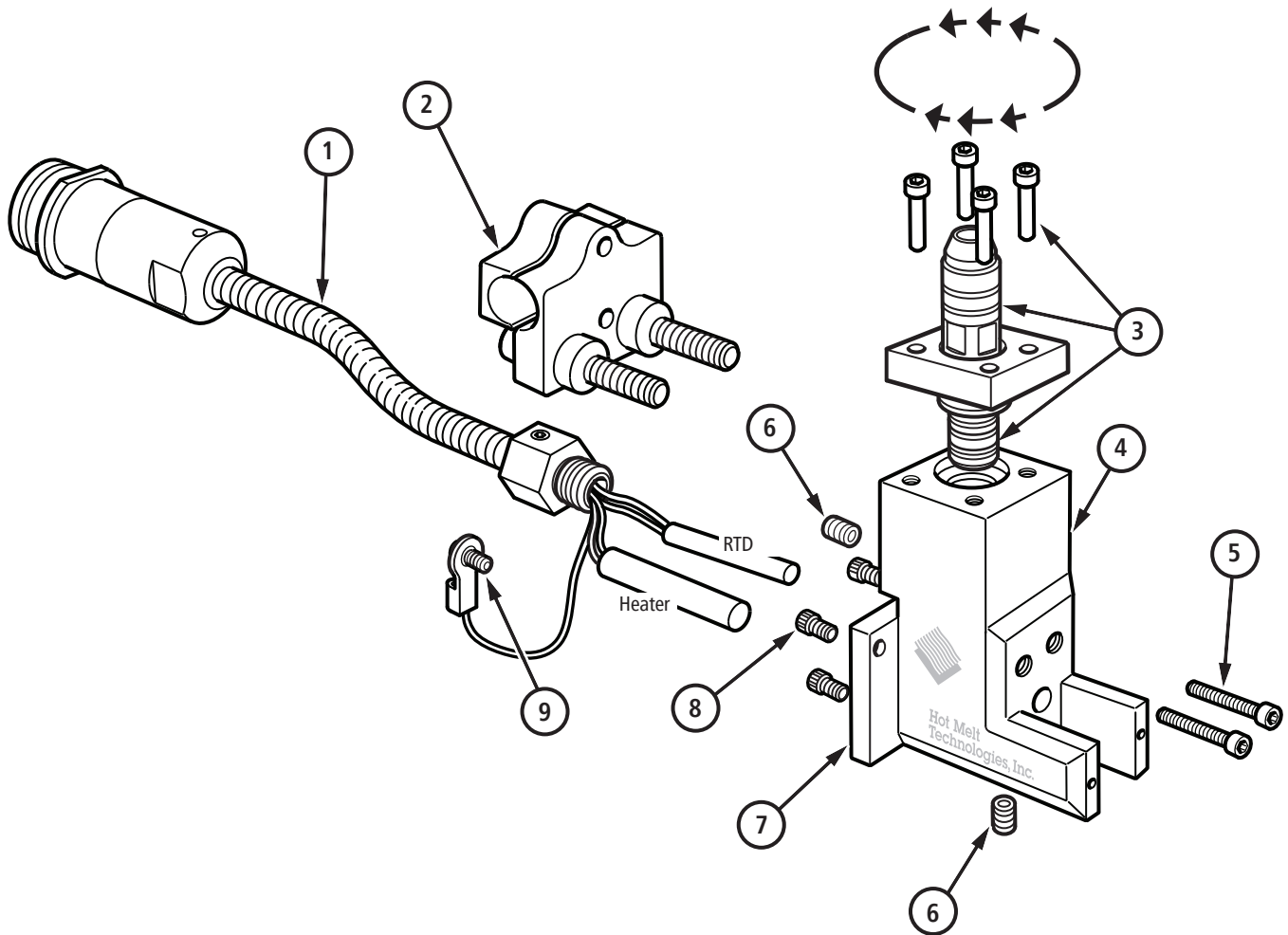




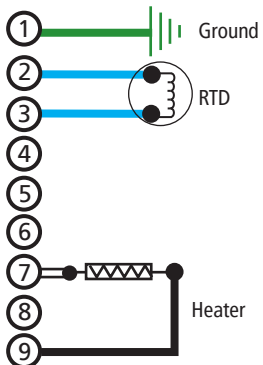
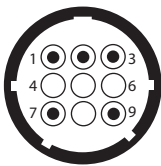
# VM Manifold 360° Swivel

VM-678-RS-1, 120 VAC

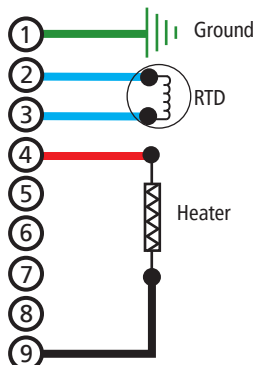
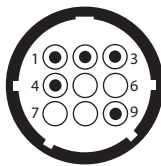
VM-678-RS-2, 220 VAC



120 VAC



220 VAC



## BILL OF MATERIALS

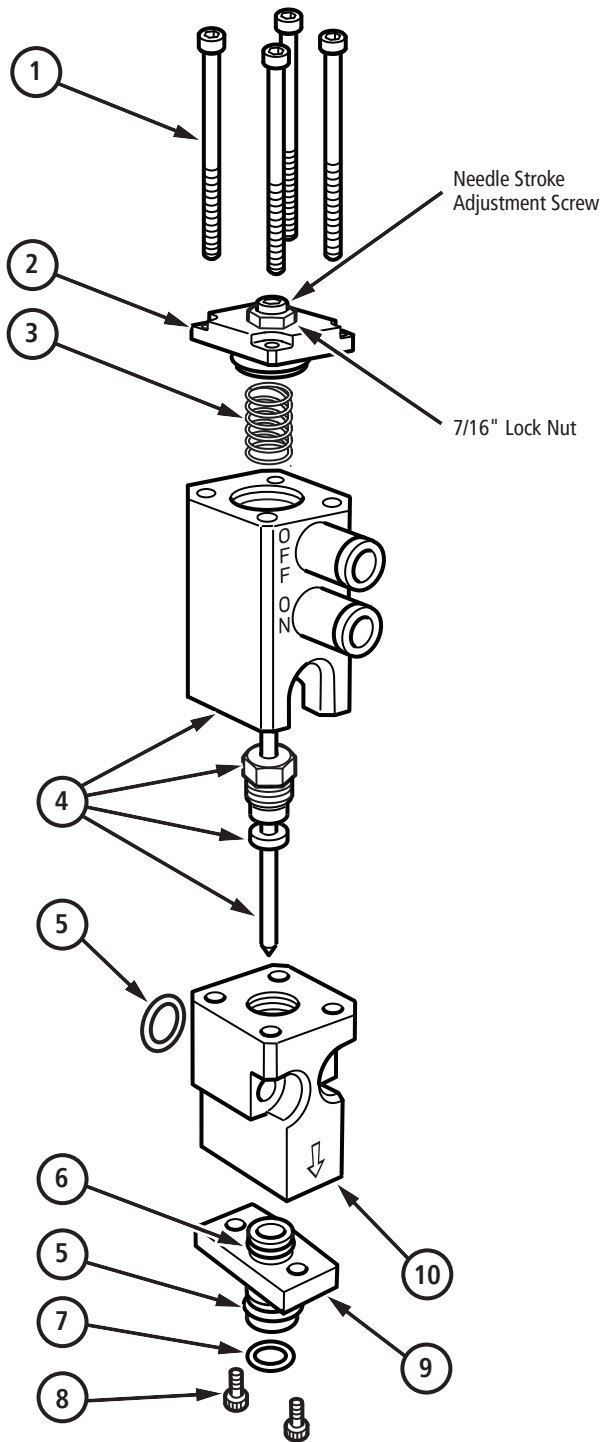
ITEM	DESCRIPTION	PART NO	QTY
1a	DFS AV-678 Heater Harness 120 VAC, 150W	922-090	1
1b	DFS XP-678 Heater Harness 220 VAC, 150W	922-290	1
2	AV 1/2" Rod Mounting Clamp Kit	913-004	1
3	JIC Swivel Assembly	912-546	1
4	Manifold Block	130-031	1
5	Socket Head Cap Screw 10-32 × 1"	322-060	2
6	Pipe plug 1/16 NPT, Flush	160-196	2
7	Manifold Cover Plate	130-032	1
8	Socket Head Cap Screw 8-32 × 1/4"	322-029	3
9	Socket Head Cap Screw 6-32 × 1/4"	322-002	1





# 800 Series Valve Module Assembly

913-030, Threaded  
913-035, Non-Threaded



## Service Information

### Needle Stroke Adjustment Screw:

Adjusts how far the needle lifts off the needle seat/ nozzle when activated.

### How to Adjust:

1. Loosen the 7/16" lock nut.
2. Using a 1/8" allen wrench, turn the adjustment screw clockwise until the needle makes contact with the needle seat/nozzle.

*Caution: Do not overtighten, only make contact.*

3. Back the adjustment screw out (counter clockwise) until the appropriate flow for your application is reached.

*Note: Shorter stroke = longer seal life.*

4. Tighten the lock nut while holding the adjustment screw in place.
5. Reconnect actuation air supply.

### Activation Air Pressure:

80 - 120 psi clean, dry, non-oiled air must be used.

*Note: Air Pressure less than 80 psi may cause sluggish cycling and/or leaks.*

## BILL OF MATERIALS

ITEM	DESCRIPTION	PART NO	QTY
1	Socket Head Cap Screw 8-32 X 2 1/2"	322-040	4
2	DFS AV Stroke Adjustment Cap	913-006	1
3	AV Piston Return Spring	130-045	1
4	DFS AV-800 Piston Needle Kit	913-016	1
5	O-ring	520-023	2
6	O-ring	520-020	1
7	O-ring (non-threaded only)	520-020	1
8	Socket Head Cap Screw 6-32 X 3/8"	322-003	2
9a	AV-800/900 Needle Seat Threaded	156-801	1
9b	AV-800/900 Needle Seat w/O-ring	156-802	1
10	AV Fluid Valve Body	130-036	1

