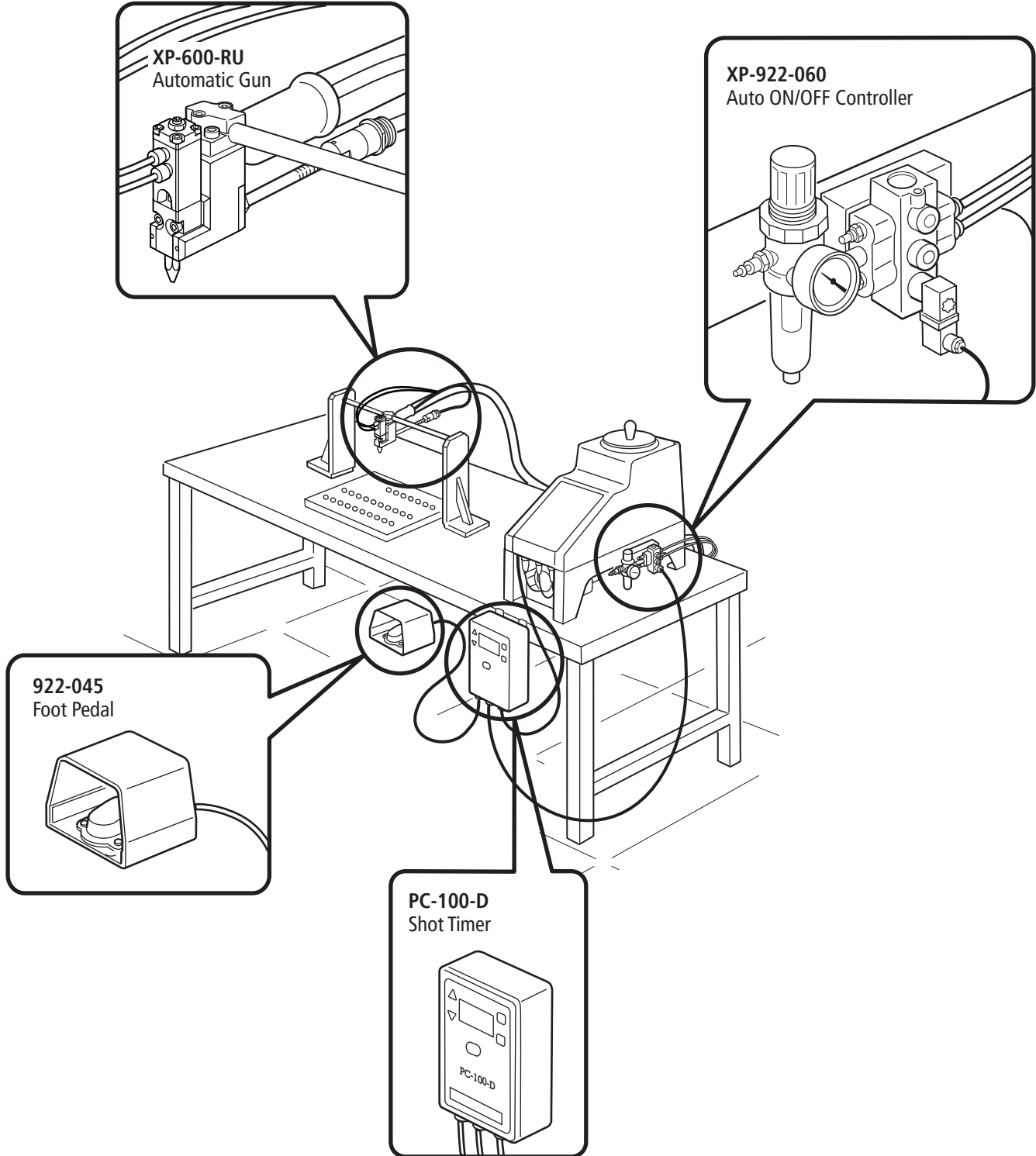




# PC-100-D Programmable Shot Timer

PC-100-D-XPBM, 220 VAC

PC-100-D-G569, 220 VAC

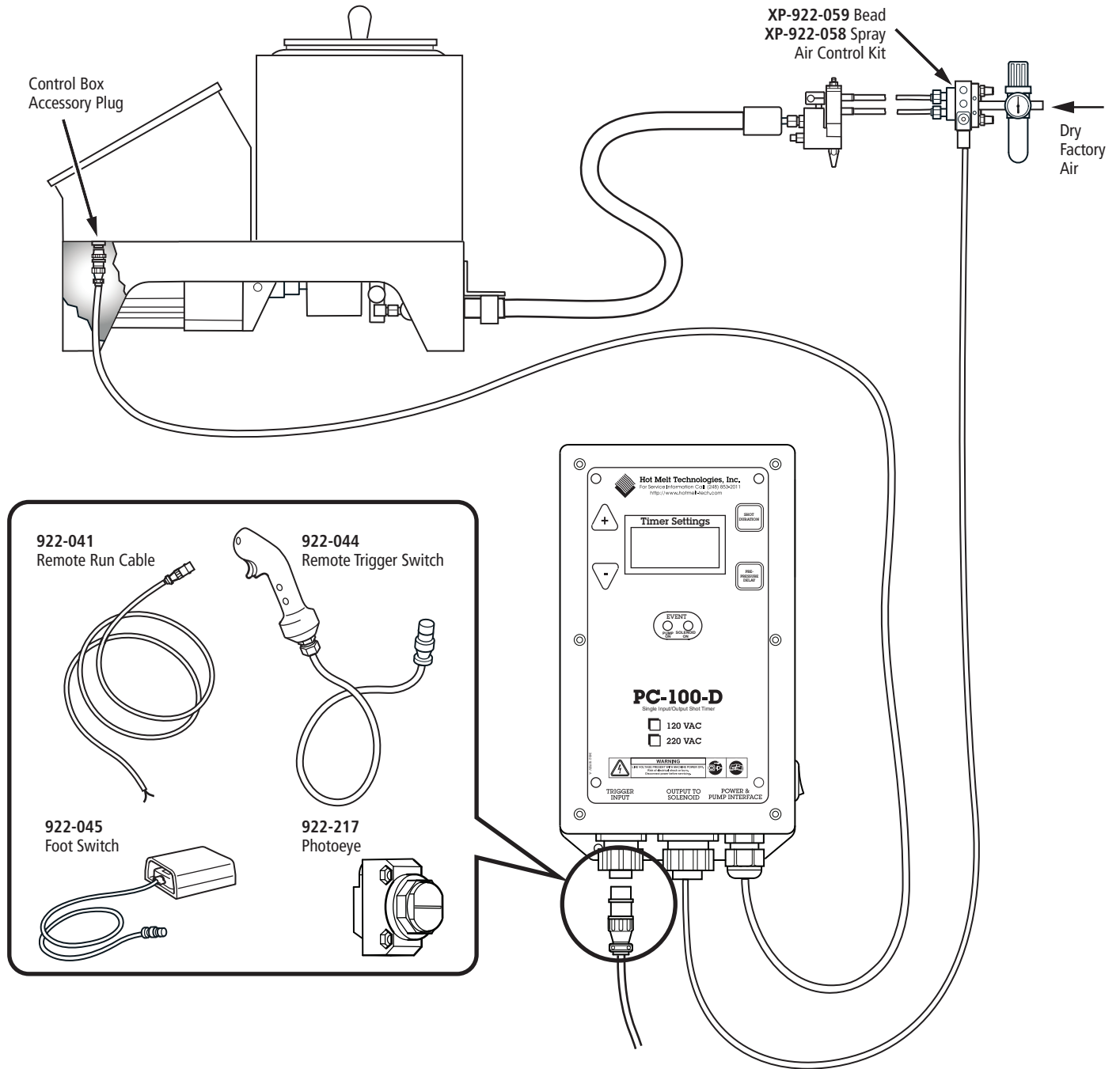




# PC-100-D Programmable Shot Timer

PC-100-D-XPBM, **220 VAC**

PC-100-D-G569, **220 VAC**



1. Plug Timer into accessory of control box on hot melt unit (accessory #1 for hose #1 or accessory #2 for hose #2).
2. Turn Power "ON."
3. Adjust Pump delay and Shot time, using the PC-100-D instructions.
4. Pull and Hold trigger on gun until shot is dispensed.
5. Repeat application.

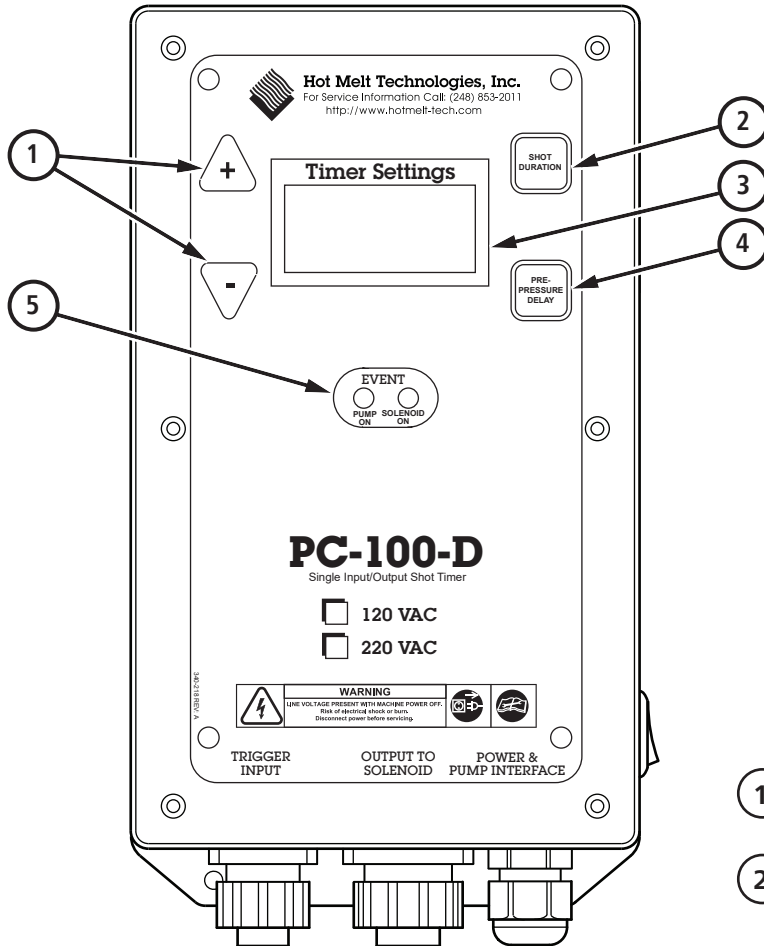




# PC-100-D Programmable Shot Timer

PC-100-D-XPBM, 220 VAC

PC-100-D-G569, 220 VAC



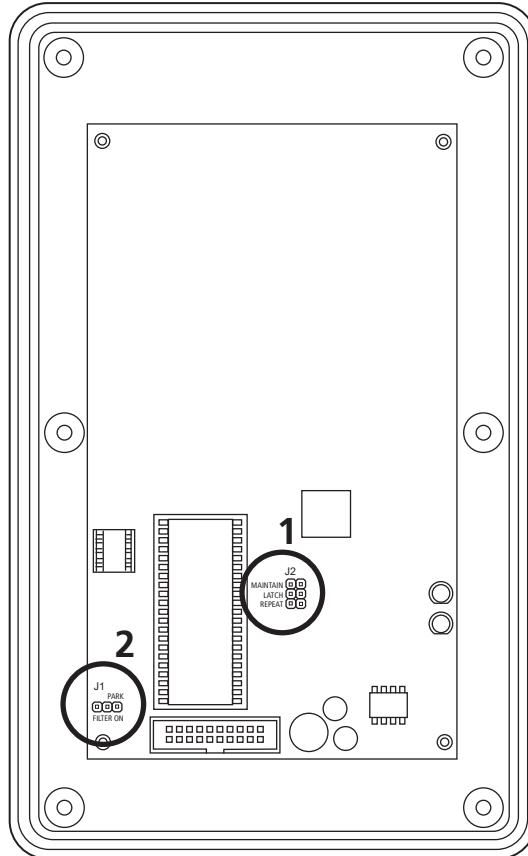
- 1 "+/-" buttons adjust the "Shot Duration" and "Pre-Pressure Delay" time.
- 2 The "Shot Duration" button displays the length of the shot time when depressed. To program a shot time press and hold the "Shot Duration" button and use the "+/-" buttons to adjust the time up and down.
- 3 The "Timer Settings" Display shows a countdown of the "Shot Duration" during an operating cycle, and displays the "Shot Duration" and "Pre-Pressure Delay" settings when each button is depressed respectively.
- 4 The "Pre-Pressure Delay" button displays the time that the pump is setup to run prior to firing a shot. To program the "Pre-Pressure Delay" press and hold the "Pre-Pressure Delay" button and use the "+/-" buttons to adjust the time up and down.
- 5 The "Event" LEDs illuminate when a programmed function is activated. The "Pump On" LED activates when the pump is active and the "Solenoid On" LED activates when a shot is fired.








# PC-100-D Programmable Shot Timer

PC-100-D-XPBM, 220 VAC

PC-100-D-G569, 220 VAC



1	MAINTAIN LATCH REPEAT 	<b>Maintain Mode</b> Timer will output shot once while input signal is present. If input signal is lost the shot will end.
	MAINTAIN LATCH REPEAT 	<b>Latch Mode</b> Timer will output shot once upon reception of an input signal. A maintained input signal is not required for a complete shot cycle.
	MAINTAIN LATCH REPEAT 	<b>Repeat Mode</b> Timer will begin shot output upon reception of an input signal. As long as the signal is maintained the programmed shot will repeat.
2	FILTER PARK ON 	<b>High Speed Signal Sensitivity</b> Configured for high speed inputs. This includes photoelectric sensors, proximity switches, etc.
	PARK ON FILTER 	<b>Low Speed Signal Sensitivity</b> Configured for low speed inputs. This includes limit switches and other mechanical actuators.

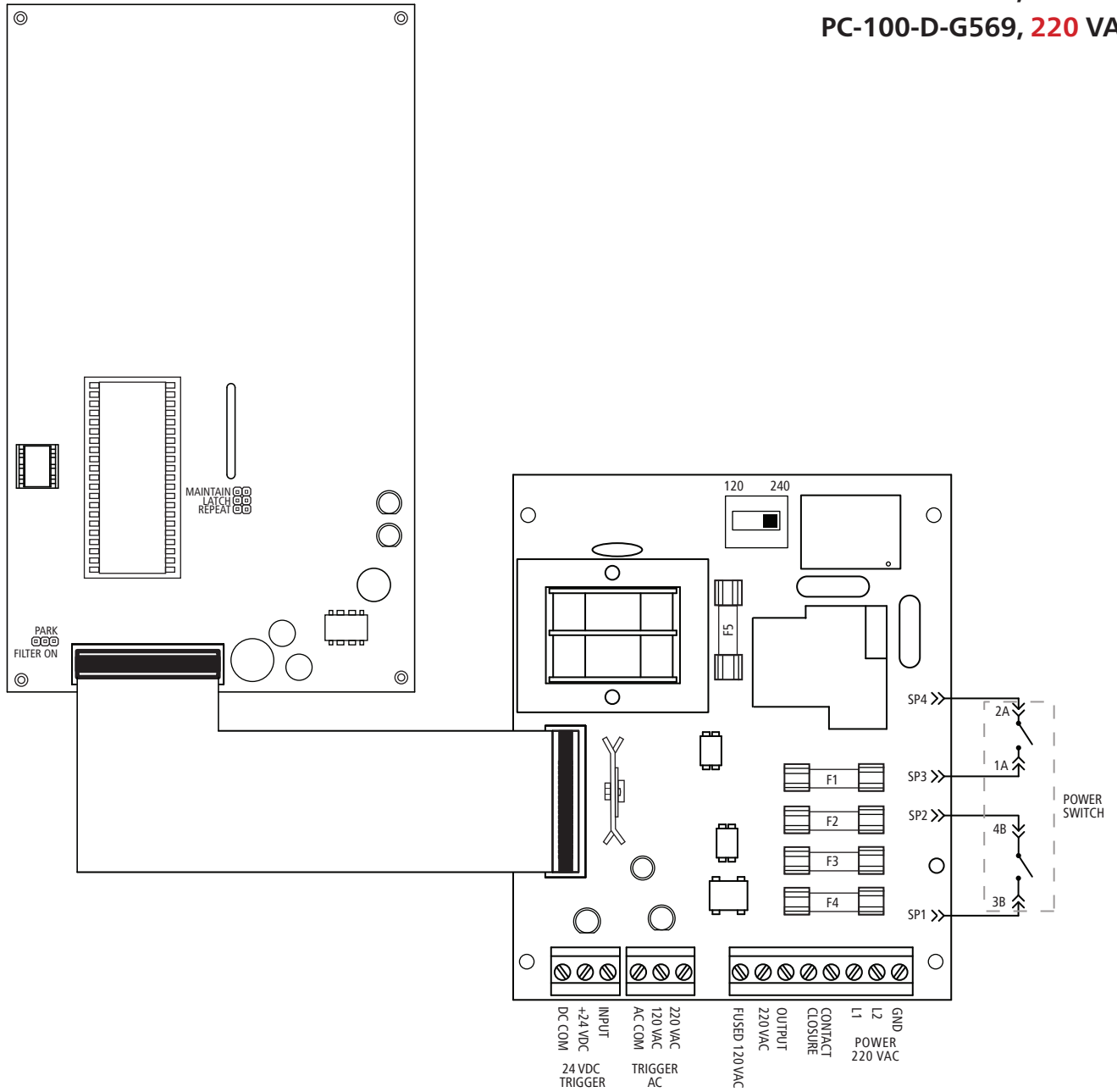




# PC-100 Programmable Shot Timer

PC-100-D-XPBM, 220 VAC

PC-100-D-G569, 220 VAC



## FUSE CHART

ITEM	DESCRIPTION	REPLACE WITH	PART NO
F1	Transformer	1 A, 125 V (GMA)	214-101
F2	PC-100-D Output	5 A, 125 V (GMA)	214-105
F3	Transformer	1 A, 125 V (GMA)	214-101
F4	PC-100-D Output	5 A, 125 V (GMA)	214-105
F5	Transformer	300mA, 250 V (GMD)	214-063

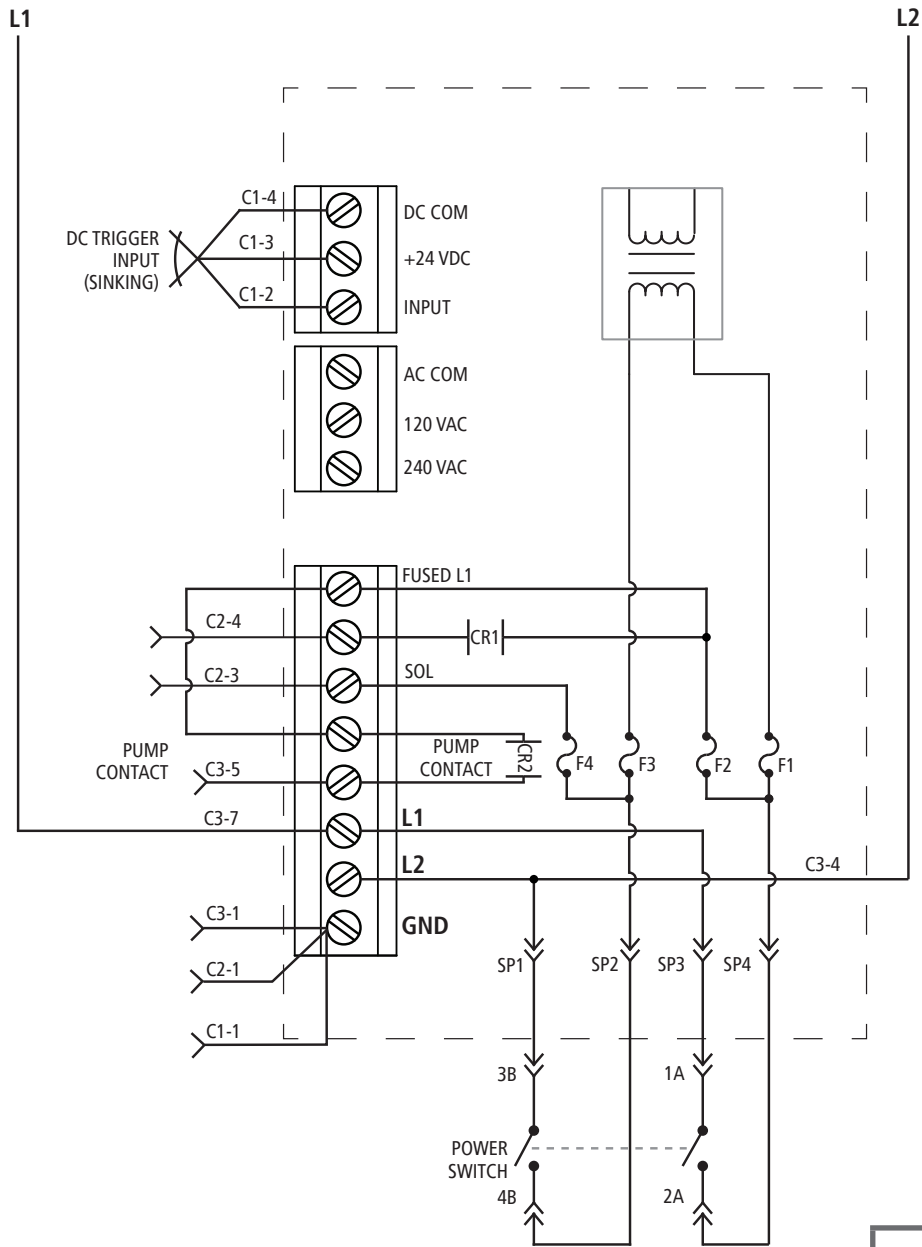
## SYMBOL LEGEND

	Switch
	Stakon Connector
	Pin Connector
	Pin Number



# PC-100 Programmable Shot Timer

PC-100-D-XPBM, 220 VAC



## SYMBOL LEGEND

	Transformer
	Fuse
	Motor
	Relay Number
	Relay (Contacts)
	Stakon Connector
	Terminal Connection
	Solenoid

## FUSE CHART

ITEM	DESCRIPTION	REPLACE WITH	PART NO
F1	Transformer	1 A, 125 V (GMA)	214-101
F2	PC-100-D Output	5 A, 125 V (GMA)	214-105
F3	Transformer	1 A, 125 V (GMA)	214-101
F4	PC-100-D Output	5 A, 125 V (GMA)	214-105
F5	Transformer	300mA, 250 V (GMD)	214-063

## CONNECTOR IDENTIFICATION

C1	Trigger Input
C2	Output to Solenoid
C3	Power & Pump Interface

## POWER CONNECTION

L1 ← 220 VAC → L2

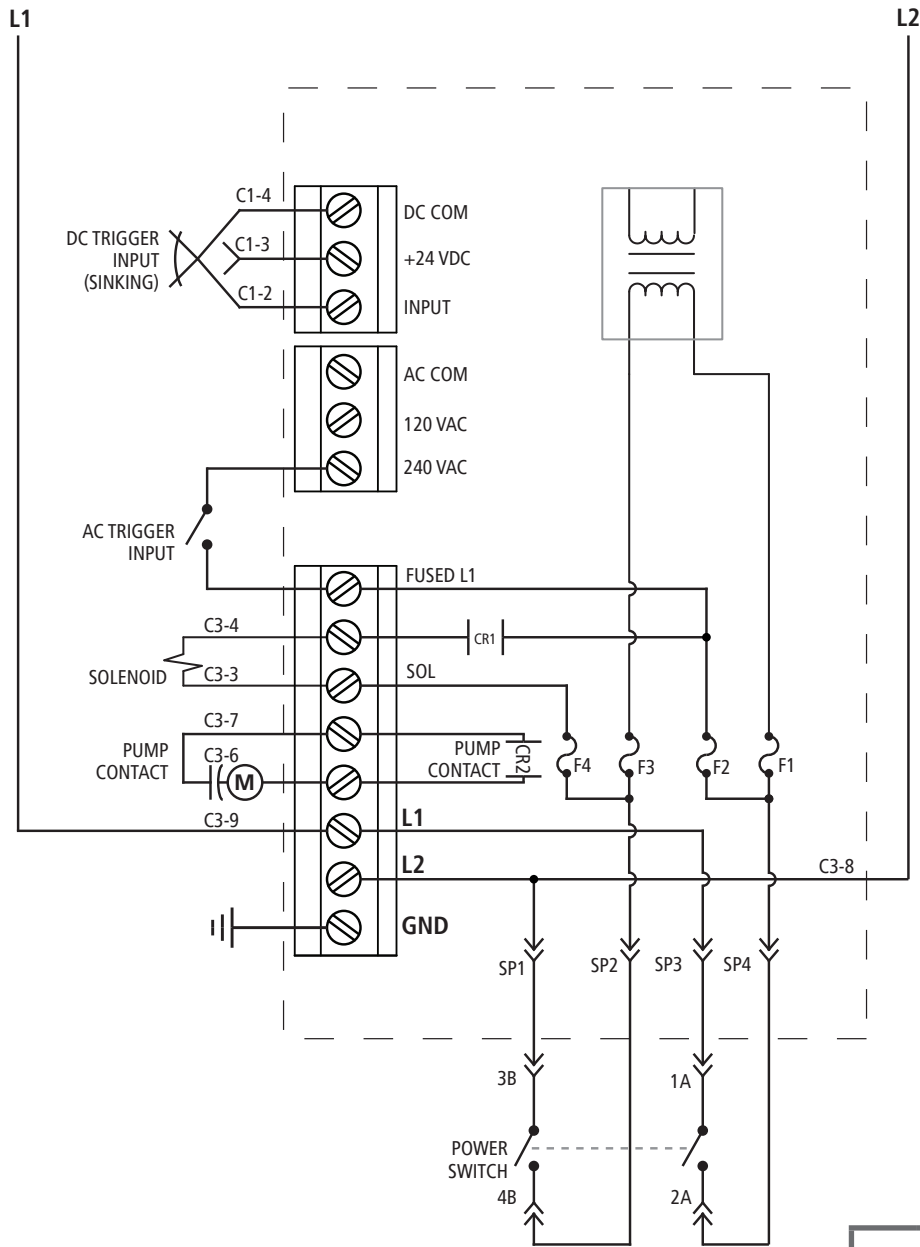
CAUTION

220 VAC POWER ONLY



# PC-100 Programmable Shot Timer

PC-100-D-G569, 220 VAC



## SYMBOL LEGEND

	Transformer
	Fuse
	Motor
	Relay Number
	Relay (Contacts)
	Stakon Connector
	Terminal Connection
	Solenoid

## FUSE CHART

ITEM	DESCRIPTION	REPLACE WITH	PART NO
F1	Transformer	1 A, 125 V (GMA)	214-101
F2	PC-100-D Output	5 A, 125 V (GMA)	214-105
F3	Transformer	1 A, 125 V (GMA)	214-101
F4	PC-100-D Output	5 A, 125 V (GMA)	214-105
F5	Transformer	300mA, 250 V (GMD)	214-063

## CONNECTOR IDENTIFICATION

C1	Trigger Input
C2	Output to Solenoid
C3	Power & Pump Interface

## POWER CONNECTION

L1 ← 220 VAC → L2

CAUTION

220 VAC POWER ONLY